



See more of your world.

Treat cataracts and astigmatism with one procedure.
Choose the AcrySof® IQ Toric lens and experience clear, sharp distance vision.



Simulated vision with cataracts and astigmatism

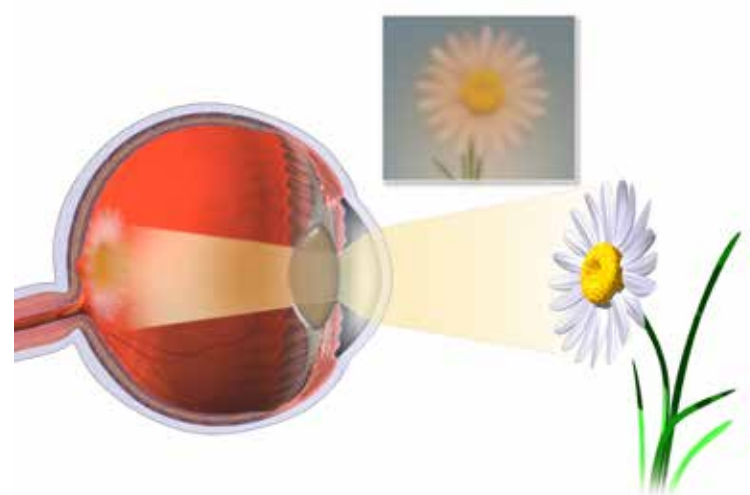


Simulated vision with a monofocal IOL and astigmatism



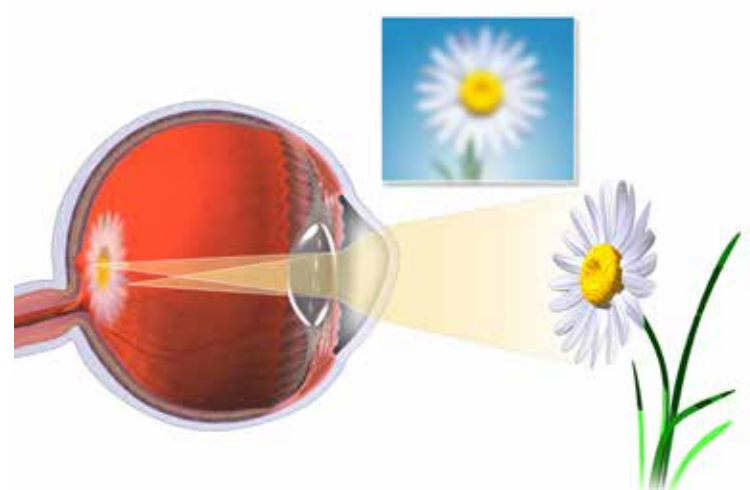
Although this result is typical, individual results may vary.

Simulated vision with AcrySof® IQ Toric IOL



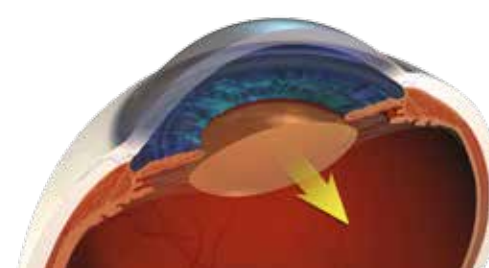
Eye with Cataract

As the eye ages, the lens becomes cloudier, allowing less light to pass through. The light that does make it to the retina is diffused or scattered, leaving vision blurry.



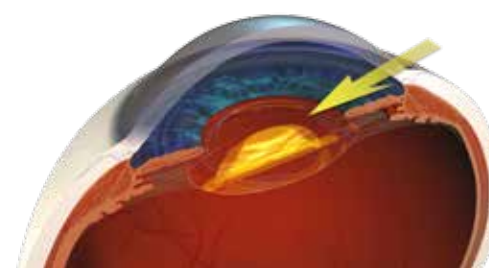
Eye with Astigmatism

When the surface of the cornea has an uneven curvature, shaped more like a football than a basketball, vision becomes distorted. This common irregularity, called "corneal astigmatism", causes blurred or distorted vision because light rays are not focused on one spot to provide clear vision.

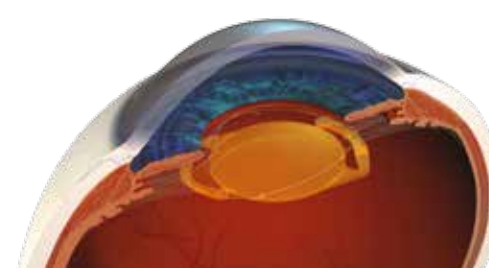


Cataract Surgery

Cataract removal - an ultrasonic probe is inserted through a tiny incision. The probe breaks the cloudy lens into pieces, then vacuums them away.



Lens Implantation - The cataractous lens is replaced with an artificial intraocular lens (IOL). IOLs are typically made of a flexible material, allowing your surgeon to fold and insert the IOL through a very small incision.



Vision Restored - Once inserted, the IOL opens, and its haptics, or "arms" unfold to keep it in place.

ACRY Sof IQ
TORIC
ASTIGMATISM IOL

AcrySof® IQ Toric IOL

CAUTION: Restricted by law to sale by or on the order of a physician. **DESCRIPTION:** The AcrySof® IQ Toric Intraocular Lenses (IOLs) are artificial lenses implanted in the eye of adult patients following cataract surgery. These lenses are designed to correct pre-existing corneal astigmatism, which is the inability of the eye to focus clearly at any distance because of difference curvatures on the cornea, and provide distance vision. **WARNINGS / PRECAUTIONS:** Contact your eye doctor immediately if you have any of the following symptoms while using the antibiotic eye drops prescribed by your doctor: itching, redness, watering of your eye, sensitivity to light. The safety and effectiveness of the AcrySof® IQ Toric IOL has not been established in patients with eye conditions, such as an increase in eye pressure (glaucoma) or complications of diabetes in the eye (diabetic retinopathy). As with any surgical procedure, there are risks involved. These risks may include, but are not limited to, infection, damage to the lining of the cornea, the retinal layer which lines the inside back wall of your eye may become separated from the tissue next to it (retinal detachment), inflammation or swelling inside or outside the eye, damage to the iris (the colored diaphragm around the pupil), an increase in eye pressure that cannot be controlled by medicine and secondary surgical procedure. A toric IOL corrects astigmatism only when it is placed in the correct position in the eye. There is a possibility that the toric IOL could be placed incorrectly or could move within the eye. This may result in less improvement or a reduction in vision because your astigmatism has not been fully corrected, or it may cause visual symptoms. **ATTENTION:** As with any surgical procedure, there are risks involved. Prior to surgery, ask your eye doctor to provide you with an AcrySof® IQ Toric Patient Information Brochure, which will inform you of the risks and benefits associated with this IOL. Discuss any questions about possible risks and benefits with your eye doctor.

Alcon

a Novartis company

© 2012 Novartis 11/12 TOR12464PA